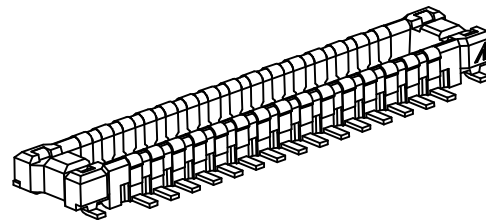
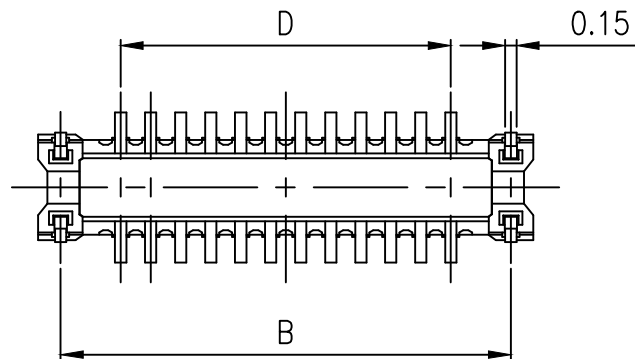
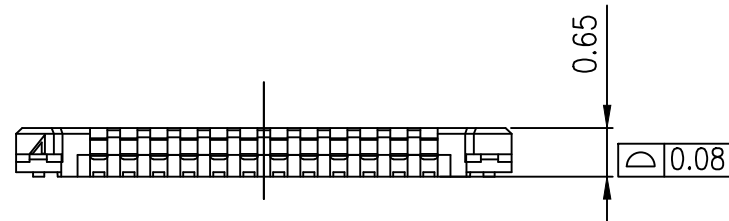
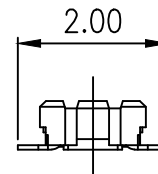
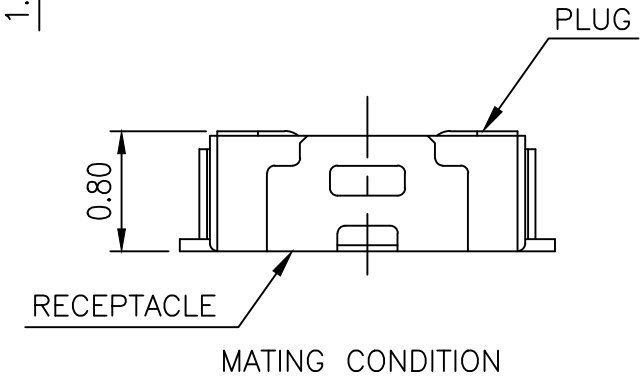


RECOMMENDED PCB LAYOUT
GENERAL TOLERANCE ± 0.05



NOTES:

- MATERIAL:
 - HOUSING: THERMOPLASTIC, HIGH TEMP., UL94V-0(LCP); COLOR:BLACK.
 - CONTACT: PHOSPHOR BRONZE
 - FITTING NAIL:PHOSPHOR BRONZE
- FINISH:
 - CONTACT:SEE ORDER INFORMATION.
 - UNDERPLATING: 50~100u" NICKEL OVERALL.
- REFLOW SOLDER CAPABLE TO 260°C PER ACES SPEC.
- SPEC. PLS. REFER TO PS-51167-xxxxx
- PACKAGE PLS. REFER TO 51167-XXXCR-XX
- MATING CONNECTOR P/N:51168
- PART NUMBER
51167-XXX X X-XXX
CKTS COLOR
 001.BLACK
PACKING CONTACT PLATING
0.TAPE REEL 1.G/F ON CONTACT



PIN	A	B	C	D
10	3.80	3.20	2.50	1.60
12	4.20	3.60	2.90	2.00
14	4.60	4.00	3.30	2.40
24	6.60	6.00	5.30	4.40
30	7.80	7.20	6.50	5.60
40	9.80	9.20	8.50	7.60
50	11.80	11.20	10.50	9.60

QUALITY SYMBOLS MAJOR CRITICAL GENERAL TOLERANCES (UNLESS SPECIFIED) X. ± 0.5 .X ± 0.25 .XX ± 0.15 .XXX ± 0.1 ANGLES $\pm 2^\circ$	DRAWN BY TSO I CHIAO DATE 23/12/25		
	CHECKED BY Chen, Chun Yuan DATE 23/12/25		
	APPROVED BY Huang Kuo Hua DATE 23/12/25	TITLE 0.4mm 0.8H BOARD TO FPC CONN .PLUG	
	UNITS mm SCALE 10 : 1	 SHEET NO. 1 OF 1	SIZE A4 REV G DWG NO. 51167-XXXXXX-XXX PART NO. SEE NOTES